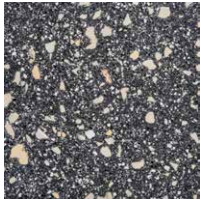


SILICASTONE™

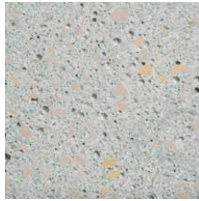
Terrazzo

Perfect for use on walls, work surfaces, table tops or furniture. Being handmade, our slabs are unique and each one varies slightly in texture and colour effect. Our colours are introduced in a variety of ways, either by adding ceramic pigments or by using specially sourced recycled aggregates. This means our Terrazzo solid surfaces will always keep their colour for decades to come.

Colours



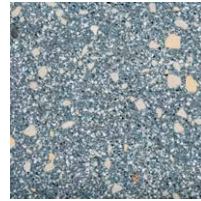
DUSK
Honed



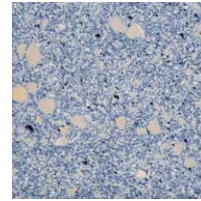
BOTANICAL
Honed



SMOKE
Honed



CELADON
Honed



SEA BREEZE
Honed



REEF
Honed

Sizes

UP TO 1000 X
1500MM



THICKNESS OPTIONS

20mm-30mm

NOTE:

Contact us for bespoke sizes and colours.

Specifications

CLASSIFICATION	BIII	THERMAL SHOCK	No evidence of damage
WATER ABSORPTION	8%	FROST RESISTANCE	No evidence of damage after 100 cycles
LINEAR DIMENSIONS	+/- 2%	BOND STRENGTH	Resin - 6.4N/mm ² / Dispersion - 2.4N/mm ²
DIMENSION RECTANGULARITY	1%	REQUIRES SEALING	Yes
SURFACE THICKNESS	+/- 2mm	INDOOR USE	Yes
STAIN RESISTANCE	Class 4	OUTDOOR USE	Yes
REACTION TO FIRE (CWT)	A1	THERMAL EXPANSION	Rate of Heating: 5 °C/minute <small>13 Thermal Expansion Coefficient 20-100°C in: is equal to for Direction X: 9.25E-6 °C⁻¹ 13 Thermal Expansion Coefficient 20-100°C in: is equal to for Direction Y: 9.38E-6 °C⁻¹</small>

For more information about this product or our full product range please contact us:
info@alusid.co.uk +44 (0)1772 429275 alusid.co.uk

ALUSID®