

# SILICASTONE™

## Tints

A stylish collection of handmade glazed wall tiles, featuring a palette of six organic colours. Our unique manufacturing process ensures every tile is individual, varying slightly in both colour and texture, bringing a unique contemporary twist to any design scheme.

### Colours



**BOWLAND GREEN**  
Gloss Varied Glaze



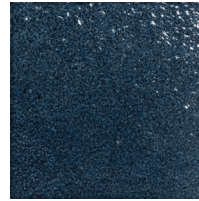
**ASHTON GREEN**  
Gloss Varied Glaze



**LYTHAM BLUE**  
Gloss Varied Glaze



**GARSTANG GREY**  
Gloss Varied Glaze



**BROCKHOLES BLUE**  
Gloss Varied Glaze



**PENWORTHAM PINK**  
Gloss Varied Glaze

### Sizes

**100 X  
100MM**



**200 X  
100MM**



**300 X  
100MM**



**150 X  
150MM**



**150 X  
300MM**



#### THICKNESS OPTIONS

12mm

### Specifications

<b>CLASSIFICATION</b>	BIII	<b>THERMAL SHOCK</b>	No evidence of damage
<b>WATER ABSORPTION</b>	12%	<b>FROST RESISTANCE</b>	No evidence of damage after 100 cycles
<b>TILE LINEAR DIMENSIONS</b>	+/- 2%	<b>BOND STRENGTH</b>	Resin - 6.4N/mm <sup>2</sup> / Dispersion - 2.4N/mm <sup>2</sup>
<b>DIMENSION RECTANGULARITY</b>	0.71%	<b>REQUIRES SEALING</b>	Yes
<b>SURFACE THICKNESS</b>	+/- 1.8%	<b>INDOOR USE</b>	Yes
<b>STAIN RESISTANCE</b>	Class 5	<b>OUTDOOR USE</b>	No
<b>REACTION TO FIRE (CWT)</b>	A1	<b>THERMAL EXPANSION</b>	Rate of Heating: 5 °C/minute
		<small>13 Thermal Expansion Coefficient 20-100°C in: is equal to for Direction X: 9.25E-6 °C<sup>-1</sup>            13 Thermal Expansion Coefficient 20-100°C in: is equal to for Direction Y: 9.38E-6 °C<sup>-1</sup></small>	

For more information about this product or our full product range please contact us:  
[info@alusid.co.uk](mailto:info@alusid.co.uk) +44 (0)1772 429275 [alusid.co.uk](http://alusid.co.uk)

**ALUSID®**